

Extreme Transformations

H11: 5505 Vincent Ave S | Designer: Katie Jaydan
Project Type: Kitchen

Castle's Interior Design Process Overview

- Initial meeting at your home - Pictures & Dimensions of space. Create ballpark
- 2nd Meeting in showroom - Ideas/Inspiration. Some basic selections
- Design & Planning Fee
- Site Visit & plans
- Final selections meeting
- Construction price & contract
- Construction begins

Conceptual Design

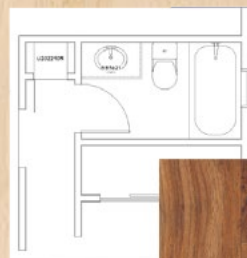
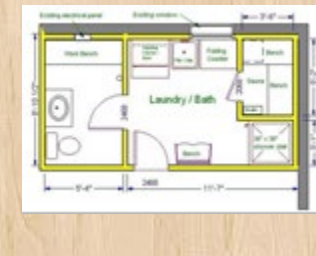
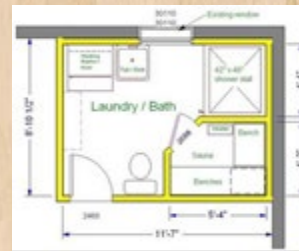
- Most baths = fixed layout
- May apply to: Basement baths, Adding square footage, Additions
- For basement baths consider door location
- Consider adding square footage from adjacent spaces to increase bath space
- Traffic flow = important
- Use linen closet to add space to bath
- Additions – extra bath creates value

Preliminary Design

- A layout is selected
- The look and feel of the space are planned using 3-d software
- Products, finishes, textures, and color are chosen
- 3-d views help determine placement of tile, fixtures, etc.

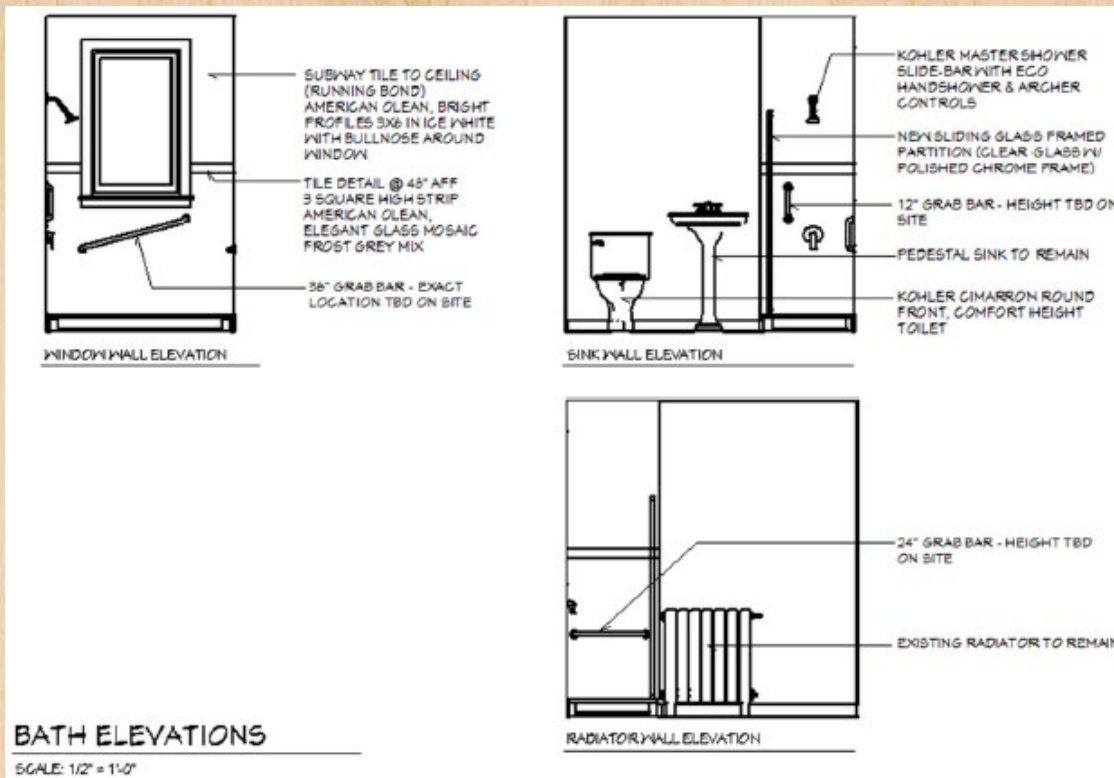
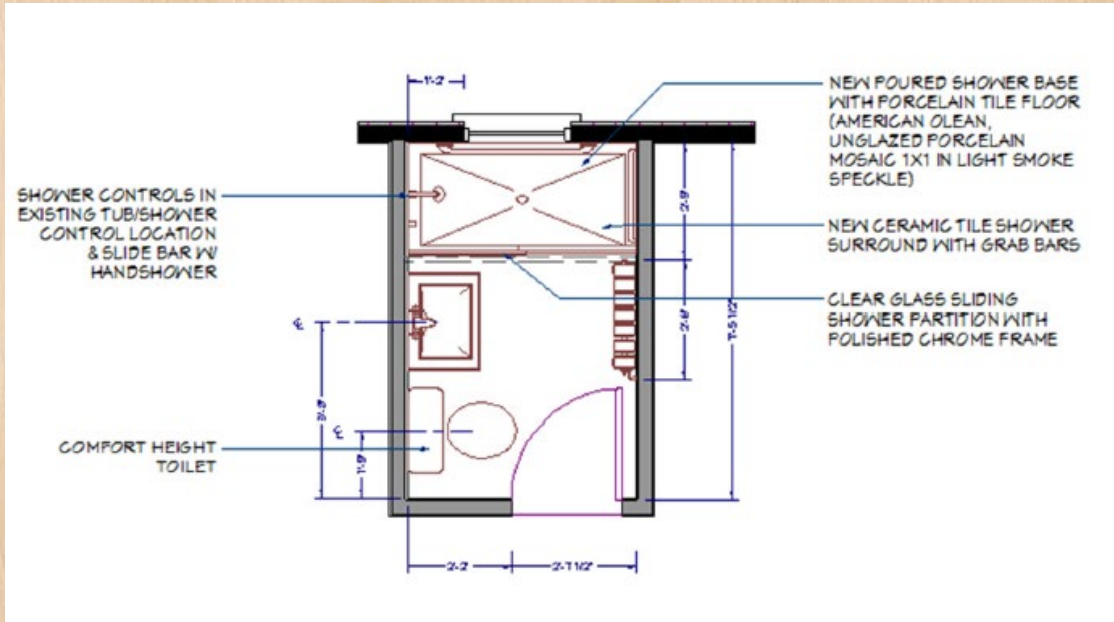
Final Design

- Fixture and material selections are finalized
- Accessory placement is determined
- All details are finalized & plans are updated for permit
- Elevations show height of accessories and exact placement of fixtures
- Tile details are selected and put into drawings



Extreme Transformations

H11: 5505 Vincent Ave S | Designer: Katie Jaydan
Project Type: Kitchen



Are you ready to get your remodeling project started? Call us today and mention House H11! 612-789-8509