



Castle

HOME TOUR

The Educational Remodeling Tour

H12: 5532 Richmond Curve

Designer: Elizabeth Bland | Project Type: Kitchen, Addition
 Educational Feature: Alternative Countertops



This South Minneapolis kitchen went from unfunctional and cramped to an open spacious room with plenty of storage and much needed counter space. By closing off the existing opening to the kitchen and creating an opening from the entry we created an L-shaped cabinet run and the former eating area was turned into a breakfast bar. This kitchen, while small, maximizes counter and cabinet space by utilizing every inch of space. The farmhouse sink, traditional cabinet style and modern concrete countertops, along with a glass backsplash give a unique look.

After

Left: Overview of new cabinetry and sink.

Center: Custom tile backsplash above new range.

Right: Detail of concrete countertop at window side breakfast nook.

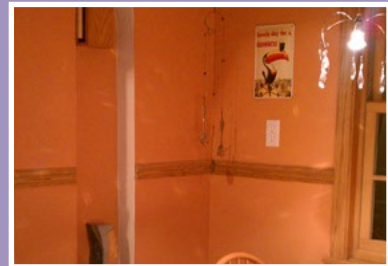
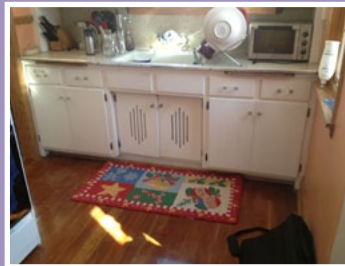


Before

Left: Original white cabinetry.

Center: Original range with no tile backsplash.

Right: Original wall before breakfast nook was installed.



Are you ready to get your remodeling project started? Call us today and mention House H12! 612-789-8509



www.castlehometour.com

BC005657

The Details

HOME STYLE

Colonial

YEAR HOME WAS BUILT

1939

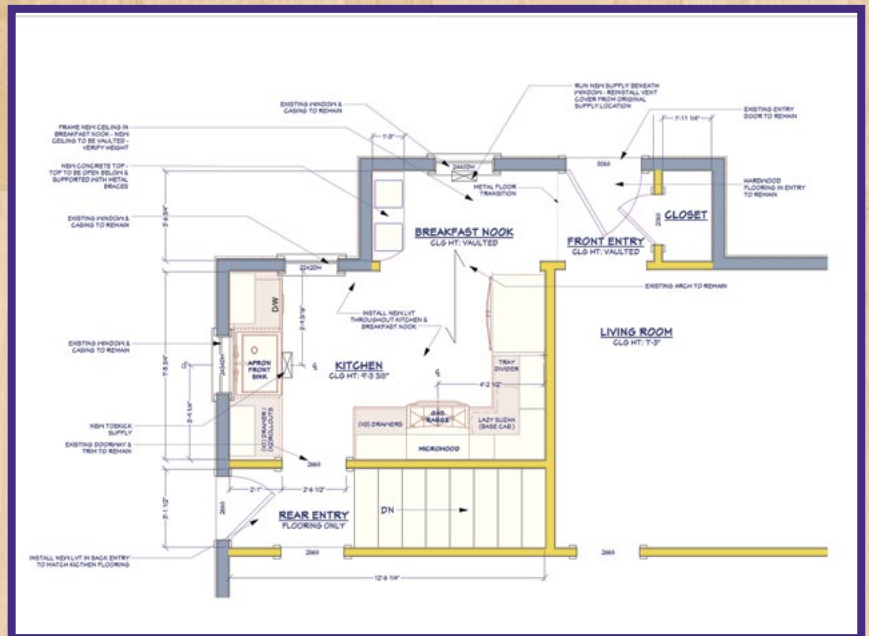
HOW DID YOU HEAR ABOUT CASTLE? *Past Customer*

PROJECT TYPE

Kitchen, 2nd Story Addition

PROJECT DURATION

4 months



APPLIANCES

Warners' Stellan

Range: *Bosch Slide In Dual Fuel Range*

Fridge: *LG Refrigerator*

Microwave: *Bosch Over the Range Microwave*

Dishwasher: *Bosch Dishwasher*

CABINETRY

Bayer Interior Woods

Door: *M106, PP4, EP8 w/ 2 1/4" Stile & Rail*

Details: *Red Oak Spiced Walnut #020*

COUNTERTOPS

Dakota Surfaces Concrete Countertops, Federal Brace Countertop Brackets

FLOORING

Mannington Adura 16x16 Casa in Tortilla

KNOBS / PULLS

Reused existing

LIGHTING

Provided by homeowner

PAINT

Completed by homeowner

PLUMBING

Sink: *Kohler Farmhouse Sink*

Faucet: *Kohler Faucet*

Disposal: *Insinkerator Badge 5*

TILE

Backsplash: *American Olean Grigio Mix*

See More Kitchens on Tour:

H1 Castle Ct
 H2 36th Ave NE
 H3 Johnson St NE
 H4 Arthur St NE
 H6 Beard Ave S
 H7 Abbot Ave S
 H8 Colfax Ave S
 H9 Aldrich Ave S
 H10 W 40th St
 H11 Vincent Ave S
 H14 W Diamond Lk Rd
 H15 24th Ave S
 H16 20th Ave S
 H17 Bohland Ave
 H21 Laurel Ave
 H22 Watson Ave
 H24 Walsh Ln

www.castlehometour.com

Connect with Castle:

