



Castle

HOME TOUR

The Educational Remodeling Tour

H15: 4143 24th Ave

Designer: Amy Hinck | Project Type: Kitchen
Educational Feature: Choosing the Right Appliances



The homeowners of this 1925 South Minneapolis home, with a love for cooking and desire to entertain family and friends, and no true space to comfortably do it in, knew remodeling was their only solution. Moving and enlarging the opening between the kitchen and the dining room allowed for a major layout change which increased countertop and storage space in the kitchen and eliminated the awkward corners of dead/wasted space. The sink, range, and refrigerator were all relocated to aide in forming a more functional layout. The bench seat under the window is dual purpose: seating for guests, as well as nice storage.

After

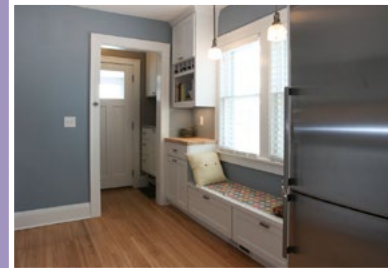
Left: Detail of new range in place



Center: Custom window bench with hidden storage



Right: Overview of new kitchen layout



Before

Left: Original range next to range and cabinetry



Center: Original below window storage



Right: Original wall and kitchen layout. Same view as After above



Are you ready to get your remodeling project started? Call us today and mention House H15! 612-789-8509

The Details

HOME STYLE

Bungalow

YEAR HOME WAS BUILT

1925

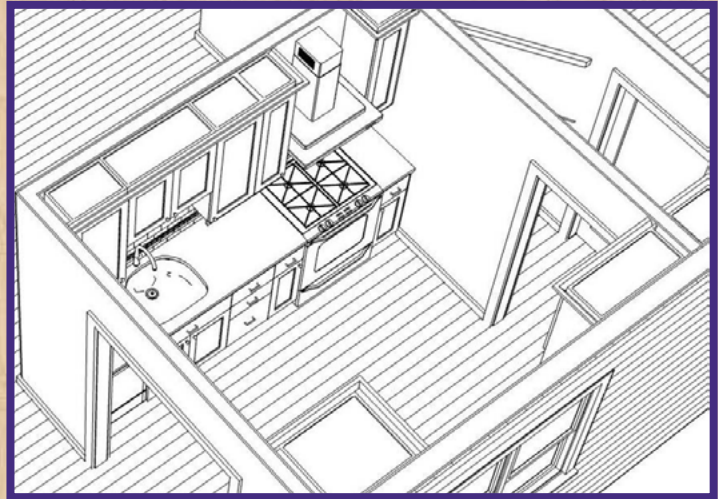
HOW DID YOU HEAR ABOUT CASTLE? *Internet*

PROJECT TYPE

Kitchen

PROJECT DURATION

2.5 months



“ We have people ask all of the time if we expanded ... the new layout makes it look so much bigger! ”

APPLIANCES

Warners' Stellan

Range: *Faber 30" Hood & Hood: Bertazzoni Gas Free Standing*

Dishwasher: *Bosch 18"*

Fridge: *Summit 9.8 ft Energy Star Fridge with Bottom Freezer 24"w*

CABINETRY

Bayer Interior Woods

Door: *Flat Panel: 10, EP8, SR5, PPFlat*

Drawers: *Slab: DF1*

Details: *Enameled on-site: Sherwin Williams Pro Classic Enamel in Extra White*

COUNTERTOPS

Zodiaq Calm Springs

FLOORING

Sand & Refinish original with water base poly; new transition board between Dining & Kitchen

KNOBS / PULLS

Amerock Porter Knobs & Pulls

LIGHTING

Progress Lighting. Archie One-Light Pendants

PAINT

Completed by homeowner: Benjamin Moore Winter Lake

PLUMBING

Sink: *Blanco, Stellar Single Bowl in Stainless Steel*

Faucet: *Kohler Bellera in Vibrant Stainless*

TILE

Backsplash: *American Olean 2x4 Urban Canvas in Light Smoke Matte*

Boarder: *Clay Squared 2x2 506r Steel Patina in Platinum*

See More Kitchens on Tour:

H1 Castle Ct
H2 36th Ave NE
H3 Johnson St NE
H4 Arthur St NE
H6 Beard Ave S
H7 Abbot Ave S
H8 Colfax Ave S
H9 Aldrich Ave S
H10 W 40th St
H11 Vincent Ave S
H12 Richmond Curve
H14 W Diamond Lk Rd
H16 20th Ave S
H17 Bohland Ave
H21 Laurel Ave
H22 Watson Ave
H24 Walsh Ln

www.castlehometour.com