



# Castle

## HOME TOUR

*The Educational Remodeling Tour*

# H1: 1292 Castle Ct

Designer: Amy Hinck | Project Type: Kitchen  
 Educational Feature: What is a Professional Remodeler?



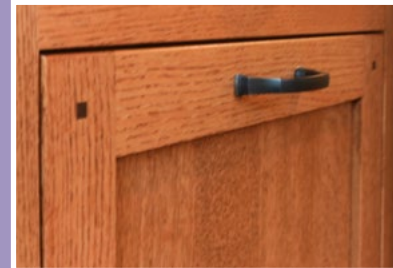
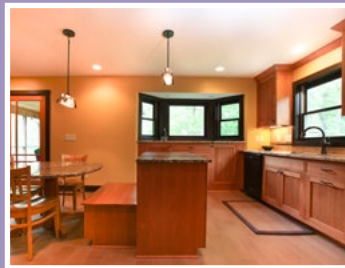
Owners of this Golden Valley home desired a more functional kitchen, reminiscent of the arts and crafts style. Major changes were made including removing a peninsula to create an island, new custom cabinetry, tile flooring, and windows. The refrigerator was relocated to abate the bottle neck / lack of work space. A large pantry with roll outs and adjustable shelving was incorporated. Great skill was used behind the scenes in dealing with an out of level floor, intricate cabinetry, and HVAC and plumbing pipes which were discovered in the soffits and needed to be removed.

## After

**Left:** Overview of kitchen facing the bay window.

**Center:** Custom tile backsplash material from Clay Squared

**Right:** Cabinetry Detail



## Before

**Left:** Original bay window

**Center:** Original range with tile backsplash

**Right:** Original peninsula



Are you ready to get your remodeling project started? Call us today and mention House H1! 612-789-8509

# The Details

## HOME STYLE

*Tudor*

## YEAR HOME WAS BUILT

1983

## HOW DID YOU HEAR ABOUT CASTLE? *Internet*

## PROJECT TYPE

Kitchen, Family Room

## PROJECT DURATION

3 months



“ Our favorite part of the project is our brand new cabinets. ”

## APPLIANCES

*New hood, microwave & fridge*

## CABINETRY

*Bayer Interior Woods*

Door: *Inset, 10F, Walnut Corner Pegs*

Drawers: *Inset, 1 piece solid wood & 5 piece large drawers*

Details: *Veneer core plywood interior & exterior, Quarter sawn red oak*

## COUNTERTOPS

Perimeter & Buffet: *Granite Siena Cream*

Island & Drop Table: *Granite Giallo West*

## KNOBS / PULLS

*Amerock Revitalized Knobs & Pulls in Oil Rubbed Bronze*

## LIGHTING

*Provided by homeowner Kichler Bayonne*

## PAINT

*Completed by homeowner:  
Benjamin Moore York Harbor Yellow*

## PLUMBING

Sink: *Kohler Cast Iron in Mexican Sand*  
Faucet: *Delta "Leland" Pull-out Faucet in Venetian Bronze*  
Disposal: *Insinkerator Evolution Compact*

## TILE

Backsplash: *Clay Squared Field Tile 2x4 Oatmeal, Border 2x4 Hematite*

Above Range: *Clay Squared Pattern 4x4 Oatmeal, 2x2 Frosted Malt, 2x2 Hematite, 2x4 Jade Moss*

## WINDOWS / DOORS

*Jeld-Wen Sitrine EX, Double hung*

## See More Kitchens on Tour:

H2 36th Ave NE  
H3 Johnson St NE  
H4 Arthur St NE  
H6 Beard Ave S  
H7 Abbot Ave S  
H8 Colfax Ave S  
H9 Aldrich Ave S  
H10 W 40th St  
H11 Vincent Ave S  
H12 Richmond Curve  
H14 W Diamond Lk Rd  
H15 24th Ave S  
H16 20th Ave S  
H17 Bohland Ave  
H21 Laurel Ave  
H22 Watson Ave  
H24 Walsh Ln

[www.castlehometour.com](http://www.castlehometour.com)