



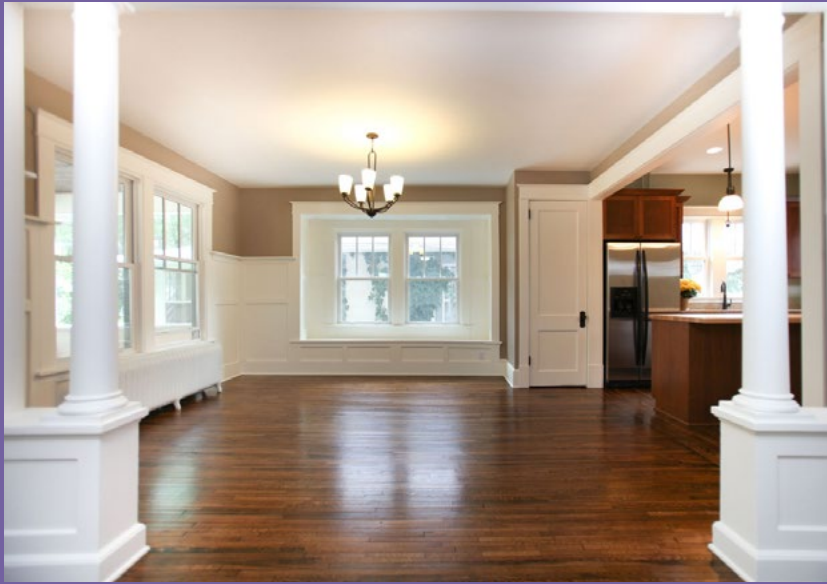
Castle

HOME TOUR

The Educational Remodeling Tour

H20: 1260 Selby Ave

Designer: Emily Blonigen | Project Type: Whole House
Educational Feature: How to Spot a Bad Flip



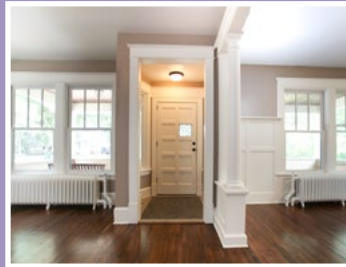
When Castle first purchased this home, it was in terrible shape. The copper pipes had been stolen, there were major structural issues, the porch ceiling had collapsed, the house had been trashed, but there was still potential. On the main floor, a wall between the dining room and kitchen was removed to create a more open floor plan. The kitchen was completely transformed with new custom cabinetry and updated stainless steel appliances, as well as recycled glass countertops and butcher block countertops. On the second floor, the bathroom was updated and the bedrooms were made-over to match the charm of the home.

After

Left: Overview of kitchen facing the bay window.

Center: Custom tile backsplash completed by Clay Squared

Right: Cabinetry Detail

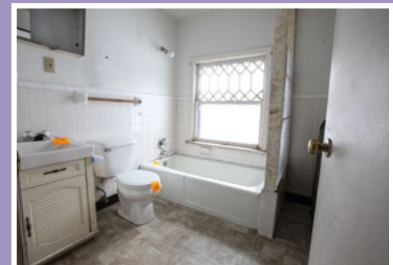


Before

Left: Original bay window

Center: Original range with tile backsplash

Right: Original peninsula



Are you interested in buying a home Castle has saved? Call us today and mention House H20! 612-789-8509

The Details

HOME STYLE

Bungalow

YEAR HOME WAS BUILT

1912

HOW DID YOU HEAR ABOUT CASTLE? *Save A Castle*

PROJECT TYPE

Whole House

PROJECT DURATION

January 2013 - June 2013



APPLIANCES

Warners' Stellian appliances provided by Castle Building & Remodeling

CABINETRY

Bayer Interior Woods Chelsea Custom Cherry in Acorn Stain

COUNTERTOPS

Perimeter: *Dakota Surfaces Recycled Glass*

Island: *Butcher Block*

Flooring

Entryway: *Marmoleum sheet goods*

Stairway: *Trade Direct Carpet in Turf Surf*

Bathroom: *American Olean Porcelain Tile*

Refinished hardware throughout

KNOBS / PULLS

Gilded Salvage Selection

LIGHTING

Rowan Oil Rubbed Bronze Pendants in Kitchen. Somerset Oil Rubbed Bronze Chandelier in Dining Room.

PAINT

Mystic Paint Low VOC. Colors to Match the following Benjamin Moore selections

Kitchen: *Benjamin Moore Tree Moss*

Living & Dining Room: *Benjamin Moore Baja Dunes*

Office: *Benjamin Moore Warm Springs*

Stairwell & Upstairs Hallway: *Benjamin Moore Ashen Tan*

Upstairs Bedrooms: *Benjamin Moore Quiet Moments*

Bathroom: *Benjamin Moore Pale Smoke*

PLUMBING

Kitchen Snk: *McCallister Sterling Silver McCallister Double Bowl*

Kitchen Faucet: *Kohler Bollera Kitchen Sink Faucet*

Bathroom Vanity: *Home Depot Shelburne Pedestal Sink*

TILE

Shower: *Subway Tile in White*

WINDOWS / DOORS

Kolbe windows Refurbished doors from Baurer Bros

Connect with Castle:

