



Castle

HOME TOUR

The Educational Remodeling Tour

H3: 2911 Arthur St NE

Designer: Katie Jaydan | Project Type: Kitchen, Addition
 Educational Feature: Working with an Architect vs. Designer



Owners of this 1-1/2 Story Tudor in Northeast Minneapolis loved their home but were ready to make some changes to make it feel more like their own. The entire Design Build Process was completed by Castle. To start, the homeowners were looking to update their Kitchen and turn their old garage into a large Family Room. The extended space on the main level creates more living space, making the home feel more spacious. With the addition, the half story also receives many changes with the Master Bedroom being turned into a suite, as well as adding an Office and 3/4 Bath.

Before

Left: Overview of original kitchen facing the sunroom.

Center: Original kitchen layout.

Right: Original exterior



Looking for after pictures?

This home just has a few punch list items and is still considered an "in progress home." Check back to our main website www.castlebri.com in the coming months for After pictures of this project!

Are you ready to get your remodeling project started? Call us today and mention House H3! 612-789-8509

The Details

HOME STYLE

Tudor

YEAR HOME WAS BUILT

1937

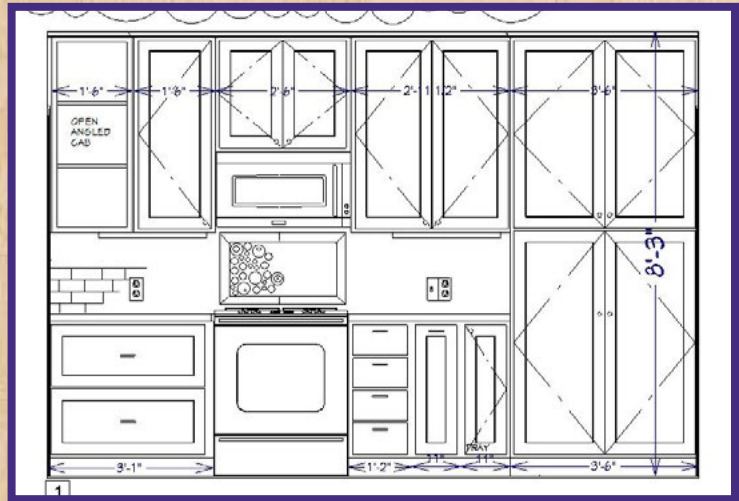
HOW DID YOU HEAR ABOUT CASTLE? *NE Showroom*

PROJECT TYPE

Kitchen, 1/2 Story Addition

PROJECT DURATION

3 months



Green Features include: Recycled glass tops, slate floors, and new windows & insulation.

APPLIANCES

Warners' Stellian

Range: *Electrolux*

Dishwasher: *Electrolux*

Range: *Electrolux*

Microwave: *Maytag*

CABINETRY

Bayer Interior Woods

Door: *Shaker*

Drawers: *Slab Drawers*

Details: *Enameled*

COUNTERTOPS

Dakota Surfaces White Background with 50% clear, brown grey, blue, and green, Square profile.

FLOORING

The Tile Shop, 2x12 Jack Muetti Slate

KNOBS / PULLS

Amerock Allison Value Hardware Knob & Cup in Antique Silver

LIGHTING

Hinkley Pendants, undercabinets, 1/2 Story Surface Mount fixtures

PLUMBING

Sink: *33" Baldwin Undermount Double Basin Fireclay Farmhouse Sink*

Faucet: *Newport Brass Pulldown with Single Lever*

Disposal: *Insinkerator Badgers*

TILE

Backsplash: *American Olean 3x6 Subway in Ice White*

Frame: *American Olean Chair Rail*

Over Range: *Mercury Mosaics Bubbles*

WINDOWS / DOORS

Kolbe Ultra Series

See More Kitchens on Tour:

H1 Castle Ct
H2 36th Ave NE
H3 Johnson St NE
H6 Beard Ave S
H7 Abbot Ave S
H8 Colfax Ave S
H9 Aldrich Ave S
H10 W 40th St
H11 Vincent Ave S
H12 Richmond Curve
H14 W Diamond Lk Rd
H15 24th Ave S
H16 20th Ave S
H17 Bohland Ave
H21 Laurel Ave
H22 Watson Ave
H24 Walsh Ln

www.castlehometour.com

Connect with Castle:

