



Castle

HOME TOUR

The Educational Remodeling Tour

H5: 1713 36th Ave NE

Designer: Katie Jaydan | Project Type: Basement
Educational Feature: Planning a Basement Remodel



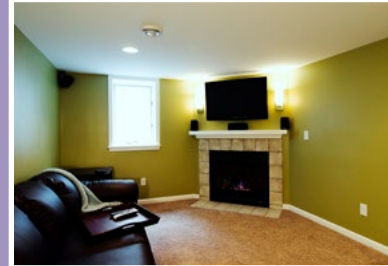
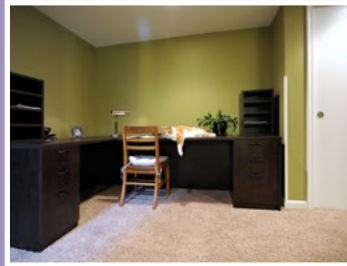
This 1953 rambler features a newly finished basement, which adds a Family Room, Guest Bedroom, Office area, a combined Bathroom/Laundry Room and an unfinished storage space with built-in shelves. The Family Room and Guest Bedroom have egress windows to provide natural light and the new walls, insulation and fireplace in the family room make this a cozy space to relax. The new 3/4 Bath features glass tile accents and a recessed niche in the walk-in shower, heated tile floor, white custom cabinets and a built-in laundry area. Thick carpet was installed on the stairway and throughout the Family Room and Guest Room.

After

Left: New office space allows for a more functional space.

Center: New basement layout.

Right: New corner fireplace.



Before

Original basement was unfinished and had a utility purpose rather than an additional living space.



Are you ready to get your remodeling project started? Call us today and mention House H5! 612-789-8509



www.castlehometour.com

BC005657

The Details

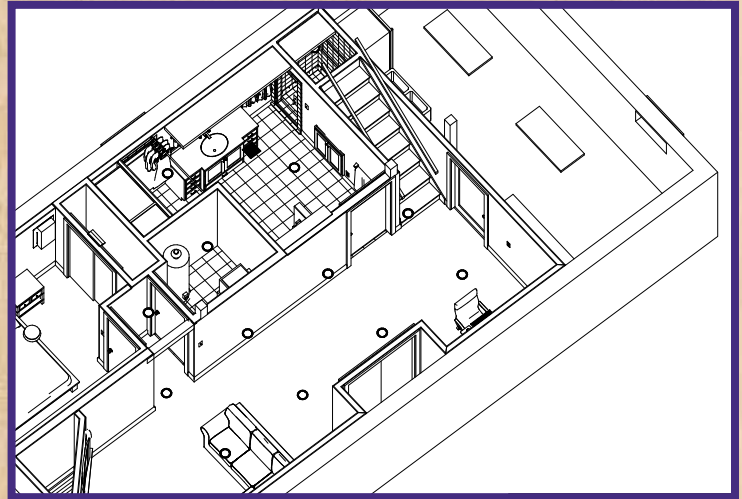
HOME STYLE

Rambler

YEAR HOME WAS BUILT

1953

HOW DID YOU HEAR ABOUT CASTLE? *Referral*



PROJECT TYPE

Basement

PROJECT DURATION

2.5 Months

APPLIANCES

Front loading washer & dryer

CABINETRY

Bayer Interior Woods

Door: *Shaker*

Details: *Flat panel, paint grade*

COUNTERTOPS

Bathroom: *Corian Sagebrush*

Laundry

Room: *Formica Concrete Stone*

FLOORING

Mohawk Smartstrand Carpet, Flair Style in Cypress

KNOBS / PULLS

Atlas Homewares Centinel Large Cabinet Pul in Polished Chrome

LIGHTING

Bellacor Riley Chrome 3-Light

PAINT

Cabinets: *Sherwin Williams in Extra White*

Family Room, Office,

Stairwell: *Sherwin Williams in Bamboo Shoot*

Bedroom: *Sherwin Williams in Silvermist*

Bathroom: *Sherwin Williams in Drizzle*

PLUMBING

Sink: *Kohler Bancroft*

Faucet: *Kohler Bancroft*

Toilet: *Kohler Bancroft*

TILE

Backsplash: *American Olean 4 1/4 x 4 1/4 Bright, Ice White with MIRMSG MMG10252 5/8 x 2 Spectra Glass blend 102*

Floor Tile: *8 x 8 and 16 x 16*

WINDOWS / DOORS

Jeld-Wen Sitrine EX, Double hung