



Castle

HOME TOUR

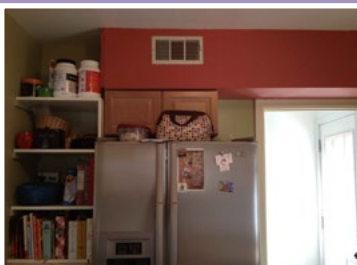
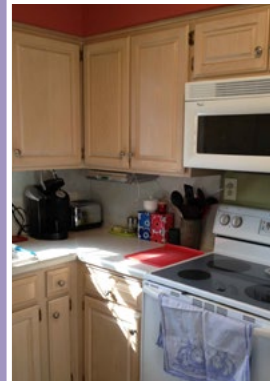
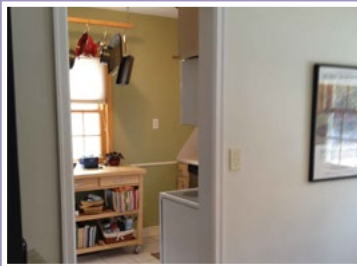
The Educational Remodeling Tour

H8: 5408 Colfax Ave

Designer: Amy Hinck | Project Type: Kitchen
Educational Feature: The Castle Process



While this South Minneapolis home may be tiny on the outside, homeowners were hoping to make a big impact with their new kitchen without an addition. To alleviate the small and cramped feeling, a wall was removed to create an open layout between the kitchen and dining room. The homeowners also decided to use french doors leading to the backyard to allow for natural light and the feeling of the outdoors being inside. Aesthetically the new kitchen makes a statement by using bold red tile, paired with more classic hardware, cabinetry and countertops. In the end, the homeowners will have a more functional space they will enjoy for years.



Top Left: Before image of existing wall before demolition

Bottom Left: Detail before of above fridge

Above center: Before image of fridge and open shelving

Above right: Detailed before of cabinetry and range

Before

See More Kitchens on Tour:

- H1: Castle Ct.
- H2 36th Ave NE
- H3 Johnson St NE
- H4 Arthur St NE
- H6 Beard Ave S
- H7 Abbot Ave S
- H9 Aldrich Ave S
- H10 W 40th St
- H11 Vincent Ave S
- H12 Richmond Curve
- H14 W Diamond Lk Rd
- H15 24th Ave S
- H16 20th Ave S
- H17 Bohland Ave
- H21 Laurel Ave
- H22 Watson Ave
- H24 Walsh Ln

www.castlehometour.com

This is an in progress home! See the completed space on next year's tour!

Are you ready to get your remodeling project started? Call us today and mention House H8! 612-789-8509

The Details

HOME STYLE

Cape Cod Story 1 1/2 Story

YEAR HOME WAS BUILT

1941

HOW DID YOU HEAR ABOUT CASTLE? *SW Journal*

PROJECT TYPE

Kitchen

PROJECT DURATION

In Progress



Did you check out the landscaping done by Field Outdoor Spaces?

APPLIANCES

Warners' Stellan

Stove & Open: *30" Electric do range - GE Profile free standing Double Oven Electric Range*

Hood: *Faber SYNT30SS300*

Dishwasher: *Miele 18"*

Microwave: *LG LCSIII2ST*

Fridge: *Fisher & Paykel RF170ADUXI*

CABINETRY

Bayer Interior Woods

Cherry, Natural finish, 3" stile & rail, flat panel doors, slab drawers, dishwasher panel, wine rack, custom island brackets

COUNTERTOPS

Perimeter: *Cambria Canterbury 3cm, Z edge*

Island: *Maple Butcher Block*

FLOORING

1 1/2" red oak in kitchen, toothed into dining existing hardwood. Natural finish - no stain

KNOBS / PULLS

Atlas Homewares - AHW A836-BN & AHW-275-BRN

LIGHTING

Kichler Lighting 3475NI Mini Pendants, Kichler Lighting 3674NI Z, Light Hendrik Semiflush Ceiling Lights

PAINT

Walls: *Benjamin Moore Baja Dunes*

Cove: *Benjamin Moore Cabot Trail*

PLUMBING

Sink: *Elkay Gourmet EELUtE3118 in Stainless Steel*

Faucet: *Moen Arbor M7594srs - Spot Resistant Stainless*

TILE

Field Tile: *4x8x1/4" Crossville in Sixteen Candles*

Border & Accents: *MIRMG24 CB - rawsilk cultural brick MG24 gloss & frosted 24x6*

WINDOWS / DOORS

Exterior Door: *Thermatru 5'x6'8", fiber-classic oak, full lite, integral white blinds, schlage latitude lever - satin nickel*

Storm Door: *Larson, Model 349-52 - Almond color*