

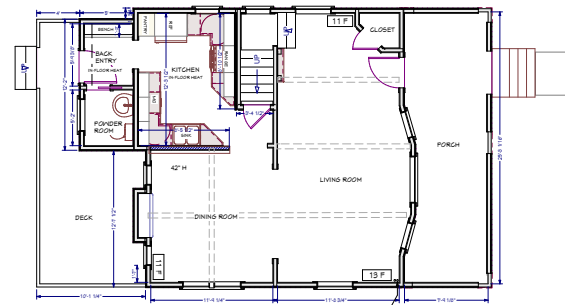
Cool existing old home charm to be spruced up:



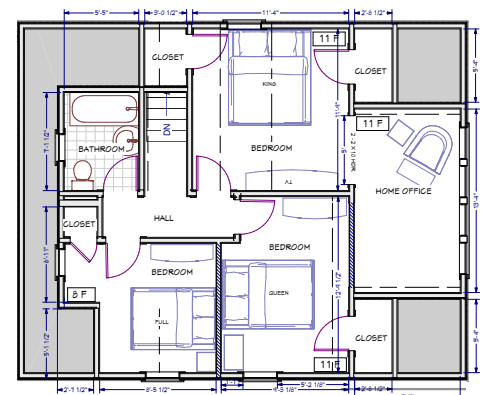
## Carter - Rescued by Save A Castle

A rear entry/powder room was added on to the 1st floor of this home. Besides a major gut to most spaces of this home, we remodeled the kitchen, 2nd floor general bathroom, refinished hardwood floors, repainted the entire house, and replaced all windows. The existing sunroom space is now insulated/heated and part of the master bedroom. This home is in a great neighborhood and was in need of a top to bottom restoration. We saved this castle in the nick of time!

*2256 Carter Ave, St. Paul, MN 55108*



First Floor



Second Floor

- Year Built** 1911
- Total Finished** 1275 Square Feet
- Main Floor** 675 Square Feet
- Upper Level** 600 Square Feet
- Basement** 600 sf unfinished storage/utility
- 3 Bedroom** 2 Bath
- 2 Car Detached Garage**



612-868-3344

www.incentiverealtymn.com

Offered by Steve Poindexter



HOMES OFFERED BY



*Save A Castle*  
Saving One Charming Old Home at a Time

Call us or visit our website to schedule a visit to one of our custom design showrooms.

## Signature Features

[www.saveacastle.com](http://www.saveacastle.com)

### Green Building Techniques

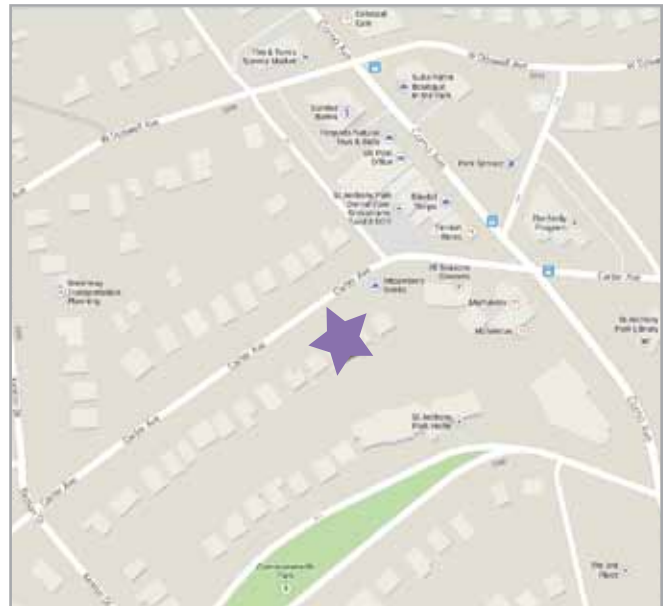
- Energy Star appliances
- Dual flush toilets
- Low E 11 windows
- New boiler and hot water maker
- Many plumbing and light fixtures Energy Star rated



### Interior Features

- 1st floor mudroom/rear entry and powder room added
- Original built-in buffet and bookcase
- Existing traditional style millwork reused and restored
- New washer, dryer, and utility sink in laundry room
- Existing hardwood floors refinished
- Entire interior freshly painted
- Light fixtures replace throughout

### Location Features



### Warranty and Service

- Warranty on workmanship
- Discounts on future remodeling projects
- Professional Interior Design help at our Showroom

612-868-3344

[www.incentiverealtymn.com](http://www.incentiverealtymn.com)

Offered by Steve Poindexter



HOMES OFFERED BY



*Save A Castle*  
Saving One Charming Old Home at a Time

Call us or visit our website  
to schedule a visit to one of  
our custom design  
showrooms.

## Signature Building Features

### Luxurious Bath Features

- Two toned hex tile floor
- Tub/shower
- Tile shower walls with 2 linear glass borders throughout
- Tile wainscot
- Larger tile in running bond pattern for walls with unique texture (less grout to clean and new twist on classic style)
- White vanity/sink
- Dual flush toilet

### Gourmet Kitchen Features

- Custom maple cabinets with choice stain finish
- Granite countertops
- Porcelain tile floor in running bond pattern
- Undermount stainless sink
- Slate tile backsplash with herringbone pattern detail
- Stainless steel appliances
- Gas range
- Full height pantry
- Built-in trash/recycling bins

### Exterior Features

- Siding patched
- Exterior to be painted- in Spring.
- Windows replaced throughout
- New rear deck and front porch - in Spring
- New driveway - in Spring
- New roof

## Custom Design Showrooms



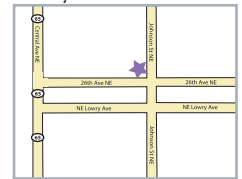
5 W. Diamond Lake Rd  
Minneapolis, MN 55419  
P) 612-789-8509



M, W, F: By Appt  
Tuesday: 8am-5pm  
Thursday 12pm - 8pm  
Saturday: 10am-3pm  
Sunday: Closed



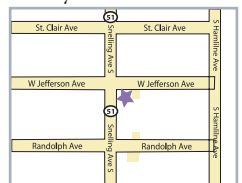
2600 Johnson St. NE  
Minneapolis, MN 55418  
P) 612-789-8509



M, Th, F: 9am-5pm  
Tuesday 12pm - 8pm  
Wednesday: 8am-5pm  
Saturday: 10am-3pm  
Sunday: Closed



362 Snelling Ave S.  
St. Paul, MN 55105  
P) 651-699-4164

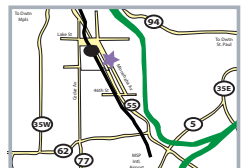


M, T, Th, F: By Appt  
Wednesday: 12pm-8pm  
Saturday: 10am-3pm  
Sunday: Closed

Our sister retail showroom



Natural Built Home  
4020 Minnehaha Ave.  
P) 612-605-7999



M, T, W, Th, F: 9am-7pm  
Saturday: 9am - 5pm  
Sunday: Closed  
[www.naturalbuilthome.com](http://www.naturalbuilthome.com)

612-868-3344

[www.incentiverealtymn.com](http://www.incentiverealtymn.com)

Offered by Steve Poindexter